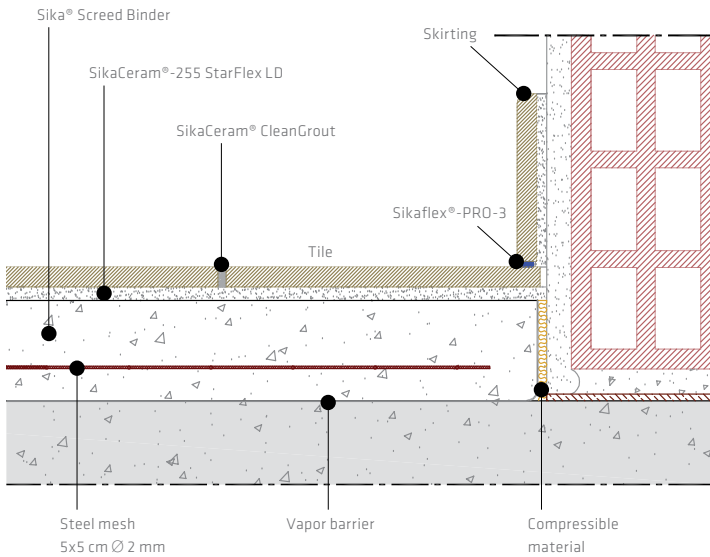


SIKA TILING SYSTEM FOR PORCELAIN TILES

Porcelain tiles are highly durable type of ceramic tile, as they are produced under higher pressure and temperature to be extremely hard and non-absorbent. Therefore they are a typical choice for floors in public and commercial areas that are subject to heavy traffic such as those in Airports, Train Stations, Shopping Centres and other Showrooms. For these areas and exposure conditions it is necessary to use a tile installation system that is able to meet these requirements and accommodate the high stresses imposed on the floor.

This means providing a substrate with high compressive and tensile strengths, with a new generation of polymer modified tile adhesive designed for bonding non-absorbent materials; and finishing the system with a flexible tile grout that has a good mechanical strength and abrasion resistance, followed by a high performance polyurethane based elastic sealant for any moving or connections joints.



KNOW-HOW FROM SITE TO SHELF



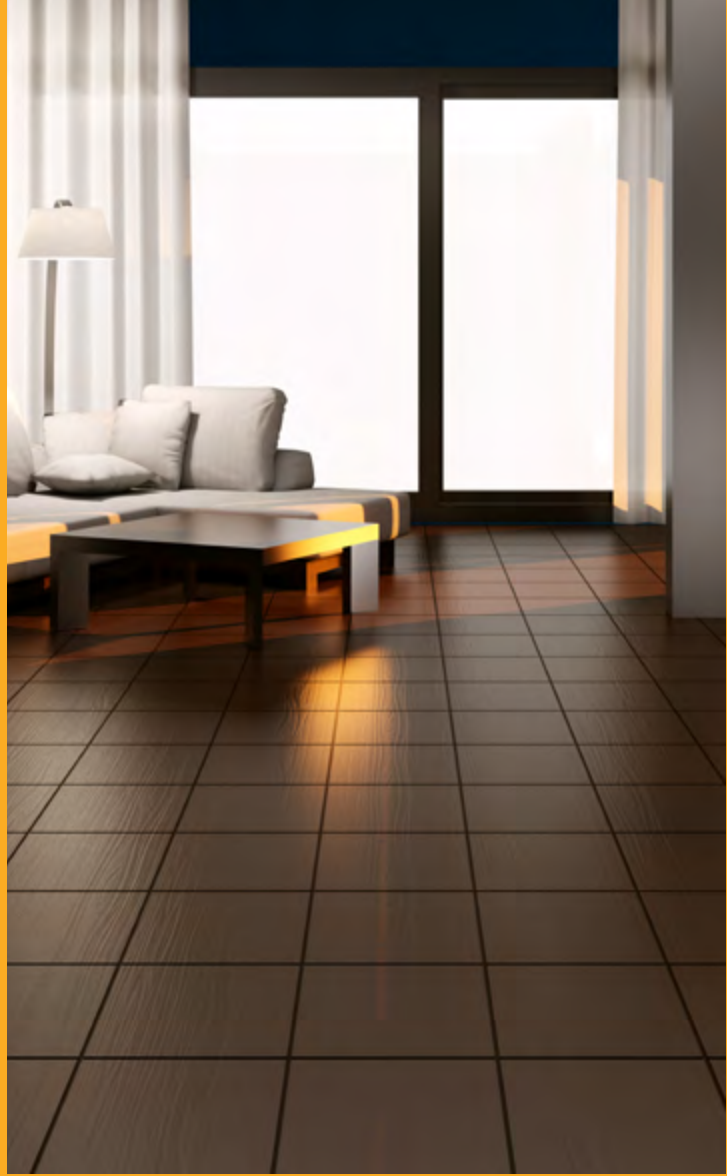
Your Local Sika Partner:

Our most current General Sales Conditions shall apply. Please consult the most current local Product Data Sheet prior to any use.

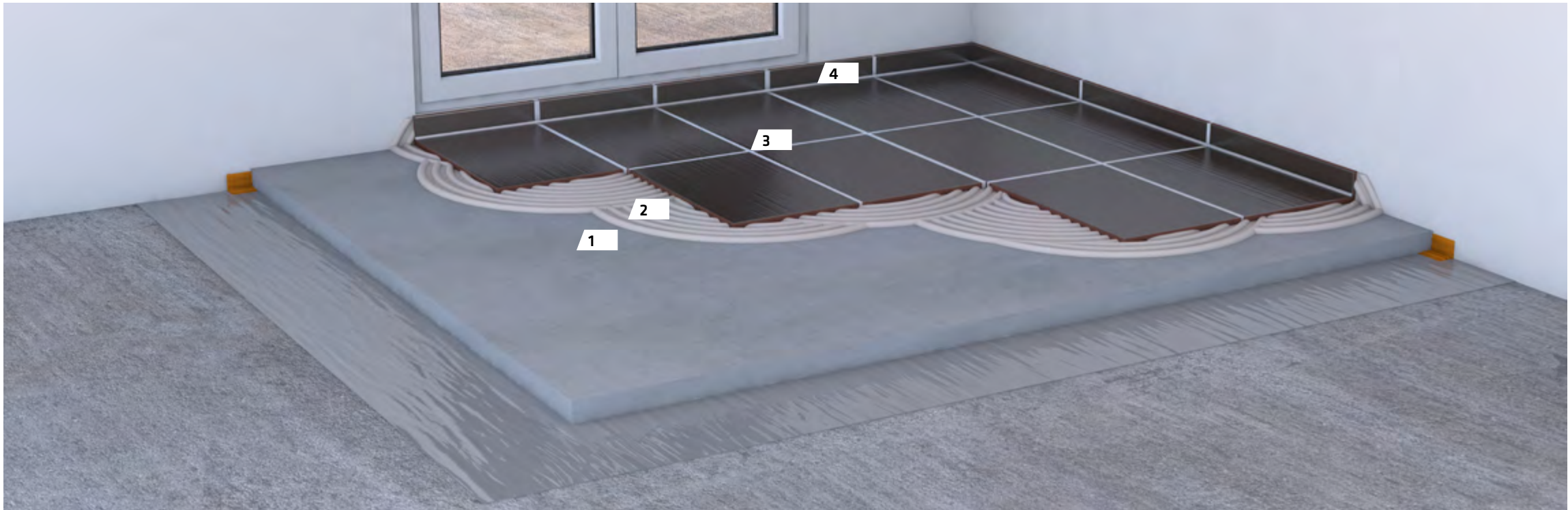
SIKA SERVICES AG
 Refurbishment
 CH-8048 Zurich
 Switzerland
 Phone +41 58 436 40 40
 Fax +41 58 436 46 86
 www.sika.com

© Sika Services AG / Refurbishment / CML / Tiling System For Porcelain Tiles / 09.2014 / 847 / 10.43028

TILING SYSTEM FOR PORCELAIN TILES



SIKA TILING SYSTEM FOR PORCELAIN TILES



SURFACE PREPARATION

1



Sika Screed® Binder

Hydraulic binder for screeds (4 - 10 cm) with normal setting, quick-drying and low shrinkage, for internal and external use. Needs to be mixed with aggregates.

TILE ADHESIVE

2



SikaCeram®-255 StarFlex LD

Highly deformable tile adhesive, for laying large sized ceramic tiles, with low dust emissions. C2TE S1.

TILE GROUT

3



SikaCeram® CleanGrout

Cementitious tile grout for 1 - 8 mm width. Water repellent, anti-fungus, high abrasion resistance, with very stable colors. CG2. It can be mixed with: SikaCeram® T-Latex S1.

SEALANT

4



Sikaflex®-PRO-3

Elastic, one-part, high performance polyurethane based sealant, for use in horizontal and vertical joints subject to movement and exposure to water and many different chemical, both internally and externally.