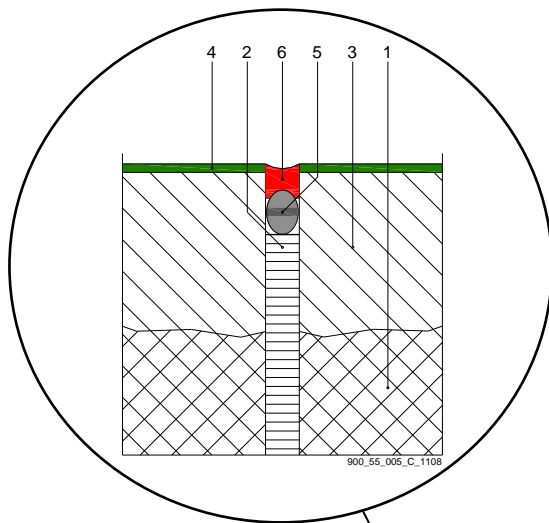


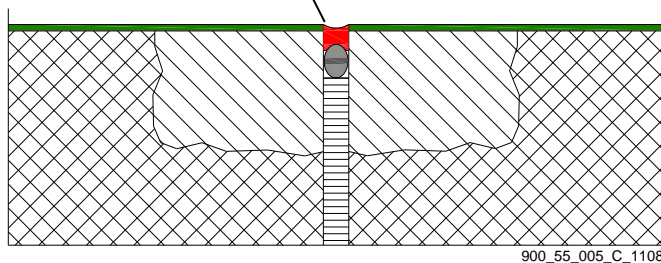
# TECHNICAL DRAWING

## Floor joint repairing with Sikaflex® and Sikadur® or Sika® MonoTop®

Joint between concrete slabs with folded edges with coating



1. Concrete slab
2. Compression profile
3. **Sikadur® epoxy mortar or Sika® MonoTop® repair mortar**
4. **Sikafloor® coating**
5. Backer rod
6. **Sikaflex® joint sealing**



The information contained herein and any other advice are given in good faith based on Sika's current knowledge and experience of the products when properly stored, handled and applied under normal conditions in accordance with Sika's recommendations. The information only applies to the application(s) and product(s) expressly referred to herein and is based on laboratory tests which do not replace practical tests. In case of changes in the parameters of the application, such as changes in substrates etc., or in case of a different application, consult Sika's Technical Service prior to using Sika products. The information contained herein does not relieve the user of the products from testing them for the intended application and purpose. All orders are accepted subject to our current terms of sale and delivery. Users must always refer to the most recent issue of the local Product Data Sheet for the product concerned, copies of which will be supplied on request.

**Sika Services AG**  
 TM Sealing & Bonding  
 Speckstrasse 22  
 8303 Pfäffikon  
 Switzerland

**Version given by**  
 René Ganz  
 Phone: --  
 Fax: --  
 Mail: ganz.rene@ch.sika.com

Technical Drawing  
 Floor joint repairing with Sikaflex® and Sikadur® or Sika®  
 MonoTop®  
 11.2013, VERSION 01  
 N° 900\_55\_005\_C\_1108

Corporate template