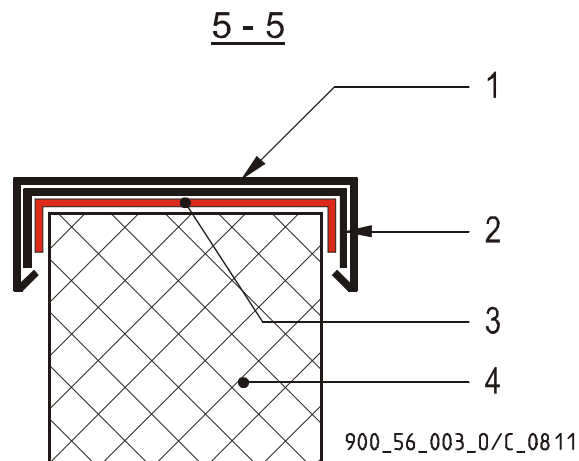
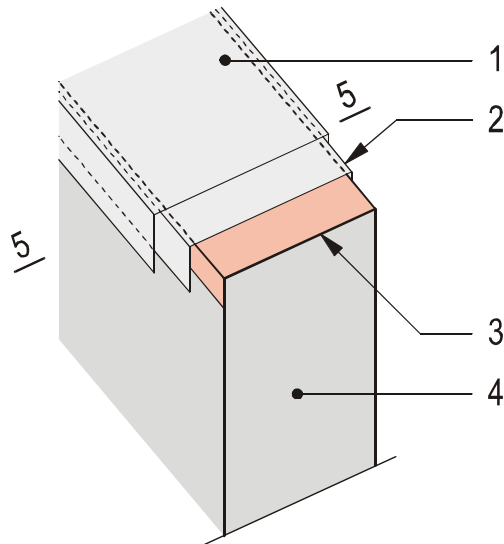


Sikabond® in Roofing

Bonding of a metallic crown roof edge coverage

Construction



- 1 Metallic crown roof edge coverage
- 2 Metal cap strip bonded onto the brickwork-/concrete wall
- 3 Sikabond® AT metal sealing and bonding joint
- 4 Concrete or brickwork wall
- 5 Crosse section

The information contained herein and any other advice are given in good faith based on Sika's current knowledge and experience of the products when properly stored, handled and applied under normal conditions in accordance with Sika's recommendations. The information only applies to the application(s) and product(s) expressly referred to herein. In case of changes in the parameters of the application, such as changes in substrates etc., or in case of a different application, consult Sika's Technical Service prior to using Sika products. The information contained herein does not relieve the user of the products from testing them for the intended application and purpose. All orders are accepted subject to our current terms of sale and delivery. Users must always refer to the most recent issue of the local Product Data Sheet for the product concerned, copies of which will be supplied on request.



Sika Services AG

Corporate Construction, Tüffenwies 16, CH-8048 Zürich, Switzerland

Phone +41 (0)58 436 40 40, Fax +41 (0)58 436 46 86, www.sika.com