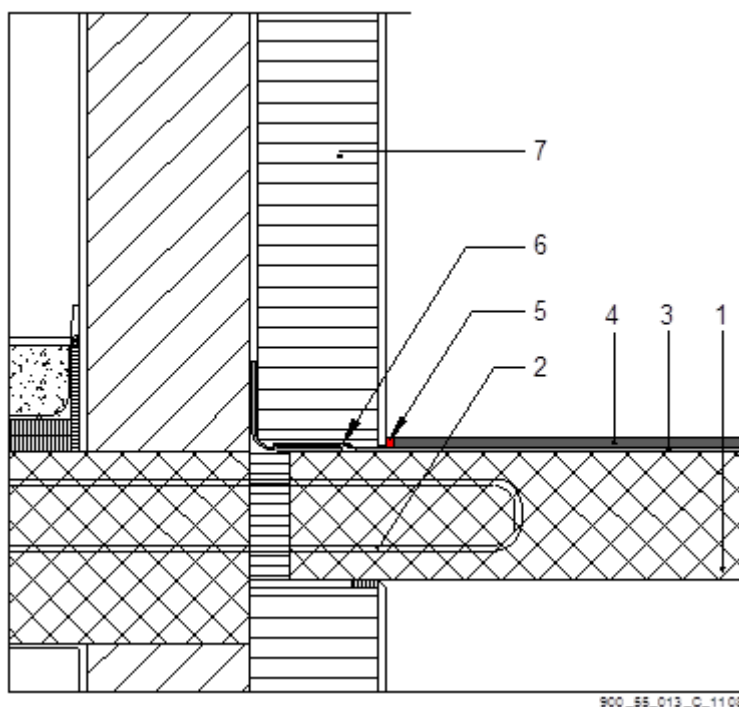


TECHNICAL DRAWING

Connection joint with Sikaflex® and Sikadur® Combiflex® System

Connection joint to facades on balconies



1. Concrete slab of balcony
2. Connection reinforcement for balcony plate
3. Waterproofing System e.g. with **Sikalastic®** or **Sikafloor®**
4. Covering e.g. with tiles or **Sikafloor®**
5. **Sikaflex®** joint sealing with PE strip
6. Waterproof connection to the façade e.g. with **Sikadur® Combiflex®** System
7. Insulation

The information contained herein and any other advice are given in good faith based on Sika's current knowledge and experience of the products when properly stored, handled and applied under normal conditions in accordance with Sika's recommendations. The information only applies to the application(s) and product(s) expressly referred to herein and is based on laboratory tests which do not replace practical tests. In case of changes in the parameters of the application, such as changes in substrates etc., or in case of a different application, consult Sika's Technical Service prior to using Sika products. The information contained herein does not relieve the user of the products from testing them for the intended application and purpose. All orders are accepted subject to our current terms of sale and delivery. Users must always refer to the most recent issue of the local Product Data Sheet for the product concerned, copies of which will be supplied on request.

Sika Services AG
 TM Sealing & Bonding
 Speckstrasse 22
 8303 Pfäffikon
 Switzerland

Version given by
 René Ganz
 Phone: --
 Fax: --
 Mail: ganz.rene@ch.sika.com

Technical Drawing
 Connection joint with Sikaflex® and Sikadur®
 Combiflex® System
 11.2013, VERSION 01
 N° 900_55_013_C_1108

Corporate template